

**SECTION 2: @ N. CONC. & NEW TRENCH DRAIN.**

- NOTES:**
- AT JOINT OVER EXIST. RET. WALL, PROVIDE THE FOLLOWING:
    - 1" HIGH "CONFLEX" PREMOULDED FIBER EXP. "JT. FILLER" BY MASOCHITE
    - STRUCTURAL SILICONE JOINT SEALANT, "WASO SILICONE SEALANT," BY WATSON BOWMAN ACME CORP.
    - CONT. PVC WATERSTOP, "RETROFIT," CAT. #RFB5 BY 80 METALS PRODUCTS APPLIED TO THE EXISTING WALL.
    - 20 #4 @ 12" OC. W/ 2" HMA, TYPE SF, TOP COURSE.
  - JOINT SEALANT: USE TYPE E WATERSTOP, SILICONE SEALANT, & 1" PREMOULDED DOP BOARD.
  - FOR SHEET MEMBRANE INSTALLATION TYP. DETAILS, SEE SHT. 6 CONTIGUOUS MEMBRANE OVER BOTH SIDES OF TRENCH WHERE SLAB ON GRADE IS PROVIDED. 4" FACE OF TRENCH INSTALL 8" SLAB BASE COURSE, PER MANUF. RECOMMENDATIONS.
  - TRENCH DRAIN WATERPROOFING SYSTEM: "RETROFIT 5000" w/ HYDROCOU DRAINAGE COMPOSITE, LIQUID BUTYTHENE MASTIC, BY GRACE CORP.

**SECTION 2A: NEW TRENCH DRAIN**

- NOTE:**
- PROVIDE BUILT-UP STEEL GRATING SEAT
  - COAT INTERIOR FACES OF 3/4" THK. PLATE & EMBEDDED HEADED STUD w/ EPOXY COATING.
  - GRATE SEATS SHALL BE ASSEMBLED IN SHOP, OF 3/4" THK. BUILT-UP STEEL SECTION, ASTM A888 MATERIAL, & HOT DIPPED GALVANIZED ZINC COATING.

**SECTION 2B: (STEEL GRATING PLAN @ NEW TRENCH DRAIN)**

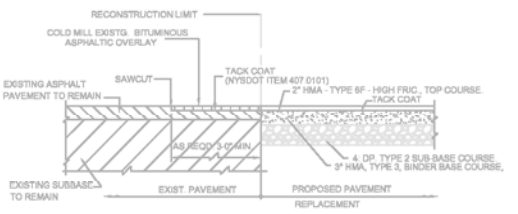
- NOTE:**
- HEAVY DUTY GRATING MATERIAL THICKNESS:
    - BEARING BARS: 3/4" W x 1 1/2" D, SPACED @ 15/16" OC.
    - CROSS BARS: 1/2" W x 1" D, SPACED @ 2" OC.
  - H-15 TRUCK WHEEL LOAD RATING.
  - GRATING SHALL BE HOT DIPPED GALVANIZED ZINC COATED.
  - THE GRATING SELECTED SHALL MEET ADA STANDARD WHEEL CHAIR REQUIREMENT.
  - THE OPEN ENDS OF THE GRATING SHALL BE BANDED.

**SECTION 3: DECK SUPPORT @ W. CONC. WALL.**

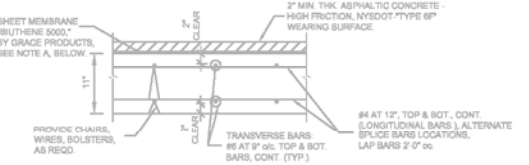
- NOTES:**
- DISCONTINUE THE DRIP GROOVE DETAILING AS FOLLOWS:
    - 3" FROM THE FACE OF RET WALLS.
    - 3" FROM THE DECK JT. ADJ. TO THE EAST RET. WALL.
    - 1" FROM DECK JT. ON THE DOWNHILL SIDE ADJ. TO THE WEST RET. WALL.
  - THE DRIP GROOVE SHALL BE CONT. OVER THE PIERS.
  - FOR TYP. SLAB REINF., SEE SECT. #6.

**SECTION 4: DECK SUPPORT @ E. CONC. WALL.**

- NOTES:**
- IF SLAB RECESS WAS PROVIDED IN WALL REMOVE EXISTING SLAB FROM RECESS w/ CARE SO THAT RECESS IS NOT DAMAGED. DO NOT CUT, OR DAMAGE, EXISTING REINFORCEMENT EXTENDING FROM WALL INTO SLAB. DO NOT USE CHIPPING HAMMER AGAINST EXISTING REINFORCEMENT. REMOVE CONCRETE BORDER TO EXISTING REINFORCEMENT BY STRIKING IT WITH A CONCRETE'S HAMMER.
  - AT JUNCTION BETWEEN THE DECK & EXISTING CONC. WALL, PROVIDE: 1" WIDE "CONFLEX, PREMOULDED FIBER EXP. "JT. FILLER" BY MASOCHITE
  - WHERE INDICATED IN SECTION, SAWCUT THE EXISTING WALL TO ACCOMMODATE 1/2" x 1/2" JOINT SEALANT: "WASO SILICONE SEALANT," BY WATSON BOWMAN ACME CORP.
  - FOR SHEET MEMBRANE INSTALLATION DETAILS, SEE TYP. DETAILS, SHT. 6.
  - FOR TYP. SLAB REINF. DETAIL, SEE SECT. 8/HT. 7.
  - PROVIDE TACK COAT BETW. ALL LAYERS, TYP., ON DECK & APPROACHES.

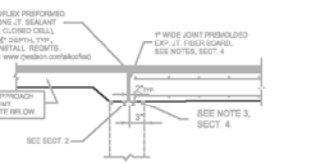


**SECTION 5: TRANSITION PAVEMENT DETAIL (OPP. HAND)**



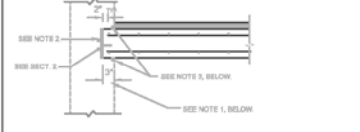
**SECTION 6: TYPICAL CONC. SLAB DETAIL.**

- NOTES:**
- APPLY MEMBRANE SHEET WATERPROOFING SYSTEM "BUTHTENE 5000" BY GRACE PRODUCTS. SHEET MEMBRANE REQUIRES THAT THE SURFACE BE TROWELED SMOOTH FOLLOWING CONC. PLACEMENT, BE FREE OF INSTALLATION & FINISHING DEFECTS, & PRIMED WITH MANUFACTURER'S DECK PREPARATION SURFACE TREATMENTS. THE INSTALLATION OF THE CARPORT DECK & PREPARATION SHALL MEET THE STANDARDS SET FORTH BY THE SHEET MEMBRANE MANUFACTURER. DECK SURFACE SHALL MEET THE STANDARDS SET FORTH BY THE MANUFACTURER. THE CONTRACTOR SHALL INSTALL THE WATERPROOFING MEMBRANE & ITS AUXILIARY PRODUCTS, AS REQUIRED BY THE MANUFACTURER. THE SPECIFICATIONS FOR THIS PRODUCT SHALL BE INCORPORATED AS PART OF THE CONTRACT DOCUMENTS, AND FURNISHED TO THE CONTRACTOR.
  - FOR SHEET MEMBRANE INSTALLATION DETAILS, SEE SHT. #6.
  - FOR CONCRETE POUR SCHEDULE & THE USE OF SPECIALIZED INSERTS & ADDITIONAL REBAR REQUIRED @ EXPANSION, CONTRACTION, & CONSTRUCTION JOINTS, SEE SHT. #6.



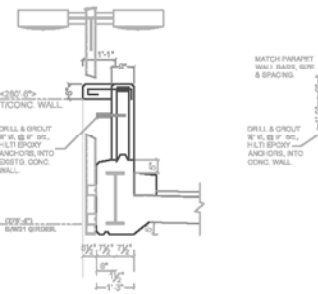
**SECTION 3: DECK SUPPORT @ W. CONC. WALL.**

- NOTES:**
- WEST APPROACH PAVEMENT:**
- EXCAVATE TO EXIST. SUB-BASE & PAVEMENT. INSTALL THE FOLLOWING PAVEMENT, IN 2" HIGH LIFTS, TO 95% PROCTOR DENSITY.
- 4" NYSDOT TYPE 2 SUBBASE
  - 3" NYSDOT HMA, TYPE 3, BINDER COURSE
  - 2" HMA, TYPE SF, TOP COURSE
- FOR BALANCE OF NOTES, SEE SECT. 4/HT. 7.



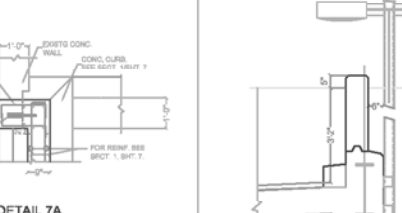
**SECTION 4: DECK SUPPORT @ E. CONC. WALL.**

- NOTES:**
- IF SLAB RECESS WAS PROVIDED IN WALL REMOVE EXISTING SLAB FROM RECESS w/ CARE SO THAT RECESS IS NOT DAMAGED. DO NOT CUT, OR DAMAGE, EXISTING REINFORCEMENT EXTENDING FROM WALL INTO SLAB. DO NOT USE CHIPPING HAMMER AGAINST EXISTING REINFORCEMENT. REMOVE CONCRETE BORDER TO EXISTING REINFORCEMENT BY STRIKING IT WITH A CONCRETE'S HAMMER.
  - AT JUNCTION BETWEEN THE DECK & EXISTING CONC. WALL, PROVIDE: 1" WIDE "CONFLEX, PREMOULDED FIBER EXP. "JT. FILLER" BY MASOCHITE
  - WHERE INDICATED IN SECTION, SAWCUT THE EXISTING WALL TO ACCOMMODATE 1/2" x 1/2" JOINT SEALANT: "WASO SILICONE SEALANT," BY WATSON BOWMAN ACME CORP.
  - FOR SHEET MEMBRANE INSTALLATION DETAILS, SEE TYP. DETAILS, SHT. 6.
  - FOR TYP. SLAB REINF. DETAIL, SEE SECT. 8/HT. 7.
  - PROVIDE TACK COAT BETW. ALL LAYERS, TYP., ON DECK & APPROACHES.

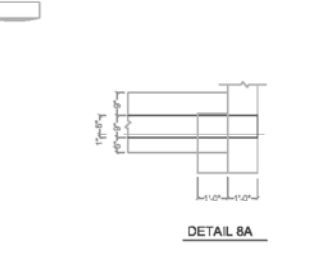


**SECTION 7: JUNCTION BETW. FASCIA & E. CONC. WALL.**

- NOTE FOR REINF. SEE SECTS. #1: TYP. PARAPET & GIRDER ENCASUREMENT #2: TYP. SLAB DETAIL #3: WEST APPROACH END CONDITION**



**DETAIL 7A**



**DETAIL 8A**

**SECTION 8: JUNCTION BETW. FASCIA & W. CONC. WALL.**

- NOTE FOR REINF. SEE SECTS. #1: TYP. PARAPET & GIRDER ENCASUREMENT #2: TYP. SLAB DETAIL #3: WEST APPROACH END CONDITION**

LEGEND
① INSTALL NEW CARPORT DECK, FOR ADD. INFO, SEE TYP. SLAB DETAIL, SECT. 5-6.
② REMOVED EXISTG. GUARD RAIL & STL. PORTS, TO BE REPLACED BY 6" WIDE CONC. PARAPET FOR CONC. CLASS. SEE NOTES, SHT. #1.
③
④ UPPER CARPORT LEVEL PITCH 1/4" PER FT. TRANSVERSE SLOPE
⑤ EXISTG. W21 ENCASE IN CONC. FOR ADDL. INFO., SEE NOTES ON SHTS. #1, #2, & #6.
⑥ LOCATE THE BOT. TO MATCH EXISTG. SLAB INSTALLATION, AS SHOWN IN SECT. 1, SHT. 7.
⑦ INSTALL NEW OPEN CHANNEL TRENCH DRAIN & STEEL GRATING, SEE DETAIL A & B, & FOR CONC. CLASS. SEE NOTES, SHT. 4.

DATE	ISSUE/REVISION
GRIGG & DAVIS ENGINEERS, P.C. 21 Crossway Scarsdale, NY 10583 TEL/FAX: 914-725-5095 e-mail: gdengineers@optonline.net	
<b>High Point of Hartsdale Condo. III - Building #500 Reconstruction of Parking Carport Garage</b>	
<b>SECTIONS &amp; DETAILS</b>	
DATE: 10/10/03	7 OF 10
SCALE: AS NOTED.	