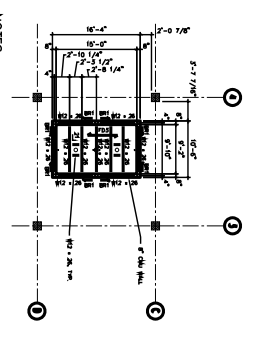


ESCALATOR FLOOR OPENING PLAN
SCALE: 1/8" = 1'-0"

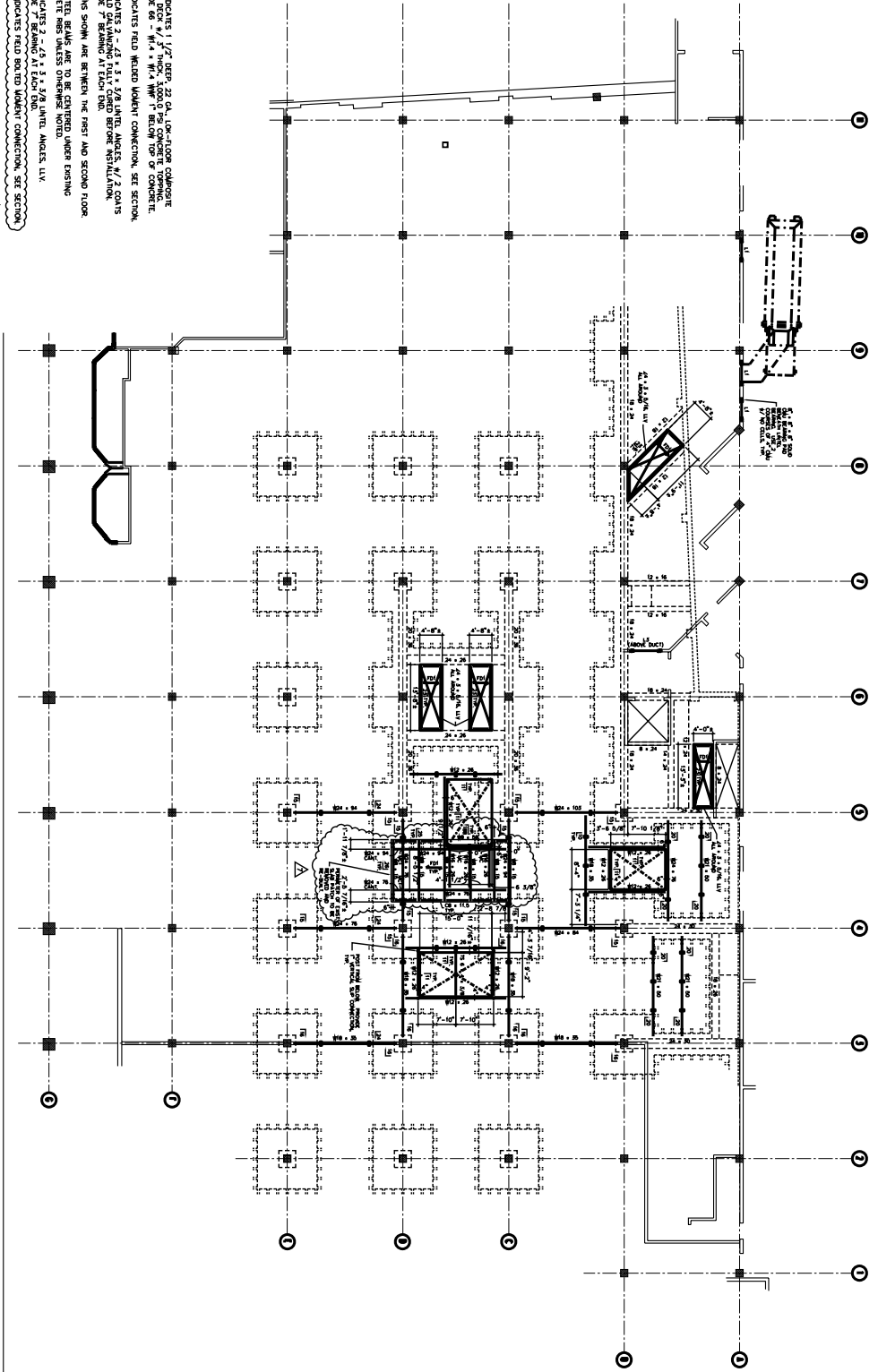
PASSENGER ELEVATOR
PIT FRAMING PLAN
SCALE: 1/8" = 1'-0"



NOTES

1. BRI INDICATES 1 1/2" DEEP, 22 GA. 10#-FLOOR COMPONENT FLOOR DECK AT 6" THICK, 3,000 PSI CONCRETE JOISTING. REINFC. 1 # 8 @ 18" O.C.
2. TOP OF SLAB ELEVATION IS 4'-0" BELOW 1ST FLOOR SLAB.
3. TOP OF STEEL ELEVATION IS 7 1/2" BELOW TOP OF SLAB.
4. BRI INDICATES 2# 3 + 3 + 1/4 DIA. BRACE BELOW PIT FLOOR.

- NOTES
1. BRI INDICATES 1 1/2" DEEP, 22 GA. 10#-FLOOR COMPONENT FLOOR DECK AT 6" THICK, 3,000 PSI CONCRETE JOISTING. REINFC. 1 # 8 @ 18" O.C.
 2. W# INDICATES FIELD WELDED JOINT CONNECTION. SEE SECTION.
 3. C# INDICATES FIELD WELDED JOINT CONNECTION. SEE SECTION.
 4. COLUMNS SHOWN ARE BETWEEN THE FIRST AND SECOND FLOOR.
 5. NEW STEEL BEAMS ARE TO BE CENTERED UNDER EXISTING CONCRETE RISERS UNLESS OTHERWISE NOTED.
 6. L# INDICATES 2" x 4" x 1/2" L# LINTEL. ANGLES, L#V.
 7. W#I INDICATES FIELD WELDED JOINT CONNECTION. SEE SECTION.



FIRST FLOOR FRAMING PLAN
SCALE: 1/8" = 1'-0"

ORIG & DAVIS ENGINEERS, P.C.
21 CROSSWAY
SCARSDALE, NY 10583
TEL./FAX (914) 725-5095

FOR PERMIT ONLY. NOT FOR CONSTRUCTION

NO.	DATE	DESCRIPTION	BY	CHKD.
1	6/29/02	ISSUED FOR PERMIT	MS	MS
2	6/29/02	REVISION 1	MS	MS
3	6/29/02	REVISION 2	MS	MS
4	6/29/02	REVISION 3	MS	MS
5	6/29/02	REVISION 4	MS	MS
6	6/29/02	REVISION 5	MS	MS
7	6/29/02	REVISION 6	MS	MS
8	6/29/02	REVISION 7	MS	MS
9	6/29/02	REVISION 8	MS	MS
10	6/29/02	REVISION 9	MS	MS
11	6/29/02	REVISION 10	MS	MS
12	6/29/02	REVISION 11	MS	MS
13	6/29/02	REVISION 12	MS	MS
14	6/29/02	REVISION 13	MS	MS
15	6/29/02	REVISION 14	MS	MS
16	6/29/02	REVISION 15	MS	MS
17	6/29/02	REVISION 16	MS	MS
18	6/29/02	REVISION 17	MS	MS
19	6/29/02	REVISION 18	MS	MS
20	6/29/02	REVISION 19	MS	MS
21	6/29/02	REVISION 20	MS	MS
22	6/29/02	REVISION 21	MS	MS
23	6/29/02	REVISION 22	MS	MS
24	6/29/02	REVISION 23	MS	MS
25	6/29/02	REVISION 24	MS	MS
26	6/29/02	REVISION 25	MS	MS
27	6/29/02	REVISION 26	MS	MS
28	6/29/02	REVISION 27	MS	MS
29	6/29/02	REVISION 28	MS	MS
30	6/29/02	REVISION 29	MS	MS
31	6/29/02	REVISION 30	MS	MS
32	6/29/02	REVISION 31	MS	MS
33	6/29/02	REVISION 32	MS	MS
34	6/29/02	REVISION 33	MS	MS
35	6/29/02	REVISION 34	MS	MS
36	6/29/02	REVISION 35	MS	MS
37	6/29/02	REVISION 36	MS	MS
38	6/29/02	REVISION 37	MS	MS
39	6/29/02	REVISION 38	MS	MS
40	6/29/02	REVISION 39	MS	MS
41	6/29/02	REVISION 40	MS	MS
42	6/29/02	REVISION 41	MS	MS
43	6/29/02	REVISION 42	MS	MS
44	6/29/02	REVISION 43	MS	MS
45	6/29/02	REVISION 44	MS	MS
46	6/29/02	REVISION 45	MS	MS
47	6/29/02	REVISION 46	MS	MS
48	6/29/02	REVISION 47	MS	MS
49	6/29/02	REVISION 48	MS	MS
50	6/29/02	REVISION 49	MS	MS
51	6/29/02	REVISION 50	MS	MS
52	6/29/02	REVISION 51	MS	MS
53	6/29/02	REVISION 52	MS	MS
54	6/29/02	REVISION 53	MS	MS
55	6/29/02	REVISION 54	MS	MS
56	6/29/02	REVISION 55	MS	MS
57	6/29/02	REVISION 56	MS	MS
58	6/29/02	REVISION 57	MS	MS
59	6/29/02	REVISION 58	MS	MS
60	6/29/02	REVISION 59	MS	MS
61	6/29/02	REVISION 60	MS	MS
62	6/29/02	REVISION 61	MS	MS
63	6/29/02	REVISION 62	MS	MS
64	6/29/02	REVISION 63	MS	MS
65	6/29/02	REVISION 64	MS	MS
66	6/29/02	REVISION 65	MS	MS
67	6/29/02	REVISION 66	MS	MS
68	6/29/02	REVISION 67	MS	MS
69	6/29/02	REVISION 68	MS	MS
70	6/29/02	REVISION 69	MS	MS
71	6/29/02	REVISION 70	MS	MS
72	6/29/02	REVISION 71	MS	MS
73	6/29/02	REVISION 72	MS	MS
74	6/29/02	REVISION 73	MS	MS
75	6/29/02	REVISION 74	MS	MS
76	6/29/02	REVISION 75	MS	MS
77	6/29/02	REVISION 76	MS	MS
78	6/29/02	REVISION 77	MS	MS
79	6/29/02	REVISION 78	MS	MS
80	6/29/02	REVISION 79	MS	MS
81	6/29/02	REVISION 80	MS	MS
82	6/29/02	REVISION 81	MS	MS
83	6/29/02	REVISION 82	MS	MS
84	6/29/02	REVISION 83	MS	MS
85	6/29/02	REVISION 84	MS	MS
86	6/29/02	REVISION 85	MS	MS
87	6/29/02	REVISION 86	MS	MS
88	6/29/02	REVISION 87	MS	MS
89	6/29/02	REVISION 88	MS	MS
90	6/29/02	REVISION 89	MS	MS
91	6/29/02	REVISION 90	MS	MS
92	6/29/02	REVISION 91	MS	MS
93	6/29/02	REVISION 92	MS	MS
94	6/29/02	REVISION 93	MS	MS
95	6/29/02	REVISION 94	MS	MS
96	6/29/02	REVISION 95	MS	MS
97	6/29/02	REVISION 96	MS	MS
98	6/29/02	REVISION 97	MS	MS
99	6/29/02	REVISION 98	MS	MS
100	6/29/02	REVISION 99	MS	MS
101	6/29/02	REVISION 100	MS	MS

LINENS-N-THINGS
MIDWAY SHOPPING MALL
SCARSDALE, NEW YORK

FIRST FLOOR FRAMING PLAN

SCALE: 1/8" = 1'-0"

MS

S02